

TAGALONG CONDOMINIUMS

ROBERT JOHNSON  
903 WINDSOR FOREST DRIVE  
ALTOONA, WI 54720  
PH: (715) 838-2226 FAX: (715) 833-2209

ORIGINAL:	8-25-05
REVISIONS:	

ORIGINAL	10-14-05
REVISIONS	12-20-05

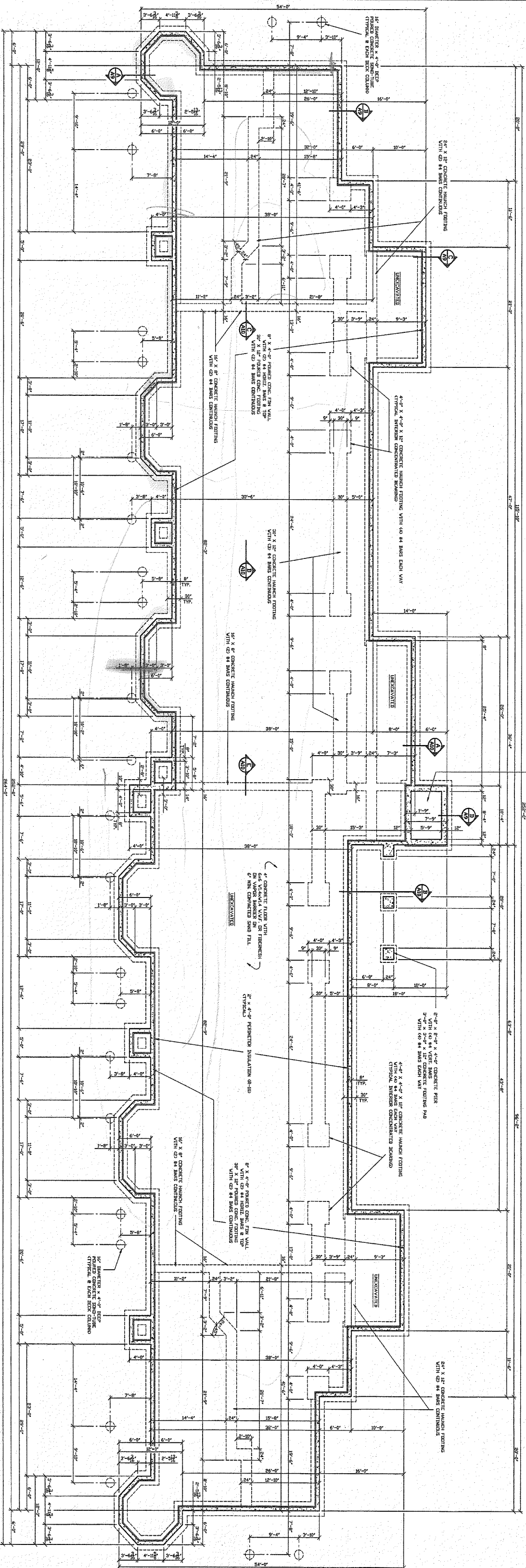
**ROBERT JOHNSON**  
 903 WINDSOR FOREST DRIVE  
 ALTOONA, WI 54720  
 PH: (715) 839-2226 FAX: (715) 839-2209

**TAGALONG CONDOMINIUMS**

- INDEX OF DRAWINGS**
- ARCHITECTURAL
- A1 SITE PLAN
  - A2 FOUNDATION PLAN
  - A3 FIRST FLOOR PLAN
  - A4 SECOND FLOOR PLAN
  - A5 THIRD FLOOR PLAN
  - A6 ROOF PLAN
  - A7 TYPE 'A' UNIT PLANS
  - A8 UNIT PLANS
  - A9 ELEVATIONS
  - A10 SECTIONS



RED CEDAR LAKE



8' wall

NOTES  
 1. SEE FOUNDATION PLAN FOR ALL DIMENSIONS TO SET ON UNDISTURBED SOIL OR COMPACTED FILL.  
 2. CONCRETE MINIMUM 3000 PSI.  
 3. SEE FOUNDATION PLAN FOR ALL DIMENSIONS TO SET ON UNDISTURBED SOIL OR COMPACTED FILL.

1 FOUNDATION PLAN  
 A2 1/4" = 1'-0"

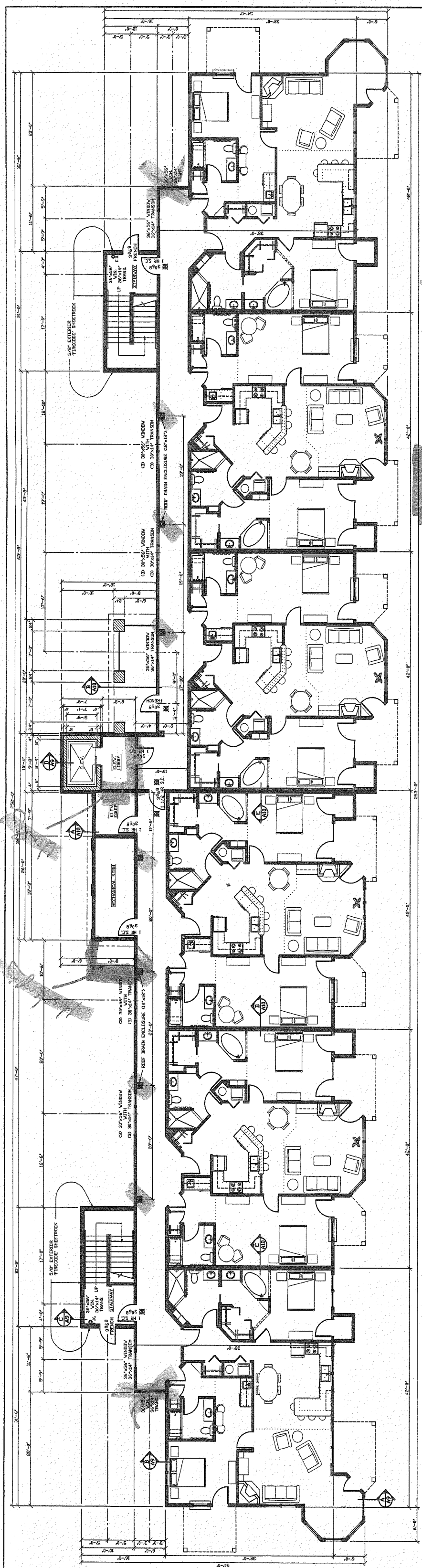
ELEVATION SHEET COVER SHEET AND DETAILS WITH MANUFACTURER'S  
 1/2" X 4'-0" FORMER CONC. FOUNDATION WALL  
 WITH 60 #4 HORIZ. BARS & 12" DIA. VERT. BARS EACH WAY  
 1/2" X 4'-0" FORMER CONC. FOUNDATION WALL  
 WITH 60 #4 HORIZ. BARS & 12" DIA. VERT. BARS EACH WAY  
 1/2" X 4'-0" FORMER CONC. FOUNDATION WALL  
 WITH 60 #4 HORIZ. BARS & 12" DIA. VERT. BARS EACH WAY  
 1/2" X 4'-0" FORMER CONC. FOUNDATION WALL  
 WITH 60 #4 HORIZ. BARS & 12" DIA. VERT. BARS EACH WAY

TAGALONG CONDOMINIUMS

ROBERT JOHNSON  
 903 WINDSOR FOREST DRIVE  
 AILTOONA, WI 54720  
 PH: (715) 833-2226 FAX: (715) 833-2209

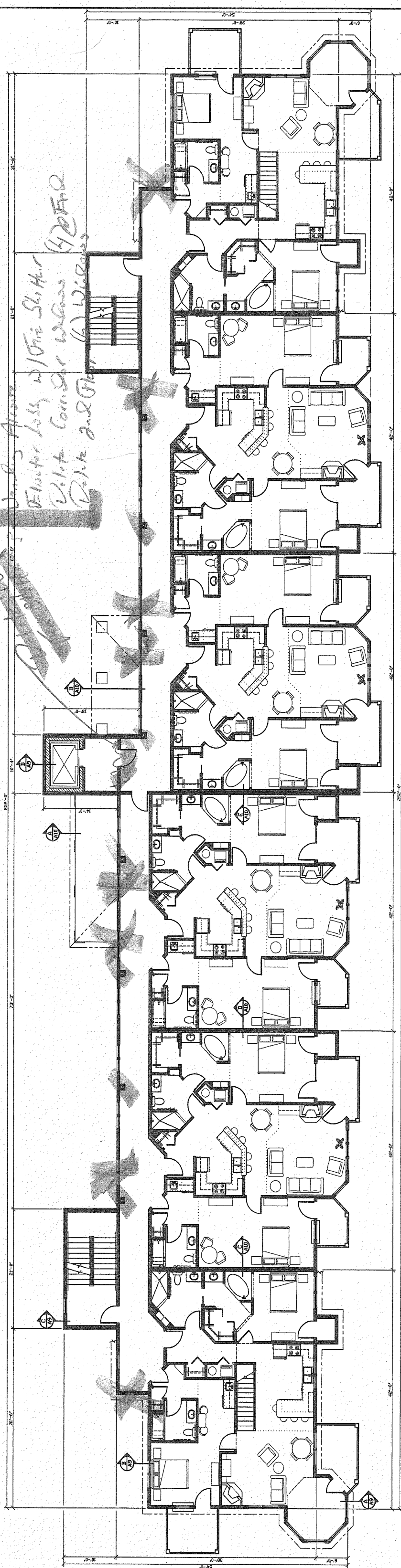
ORIGINAL  
 10-20-05  
 REVISIONS  
 12-20-05

A2  
 2 OF 10



1 FIRST FLOOR PLAN  
1/8" = 1'-0"

*Root Units in Wall Ltr. Per Slop  
Hansky's Closet  
Jan's Above  
Elevator Lobby w/ Fire Shelter  
Delete Corridor Windows  
Delete 2nd Floor (6) Windows*



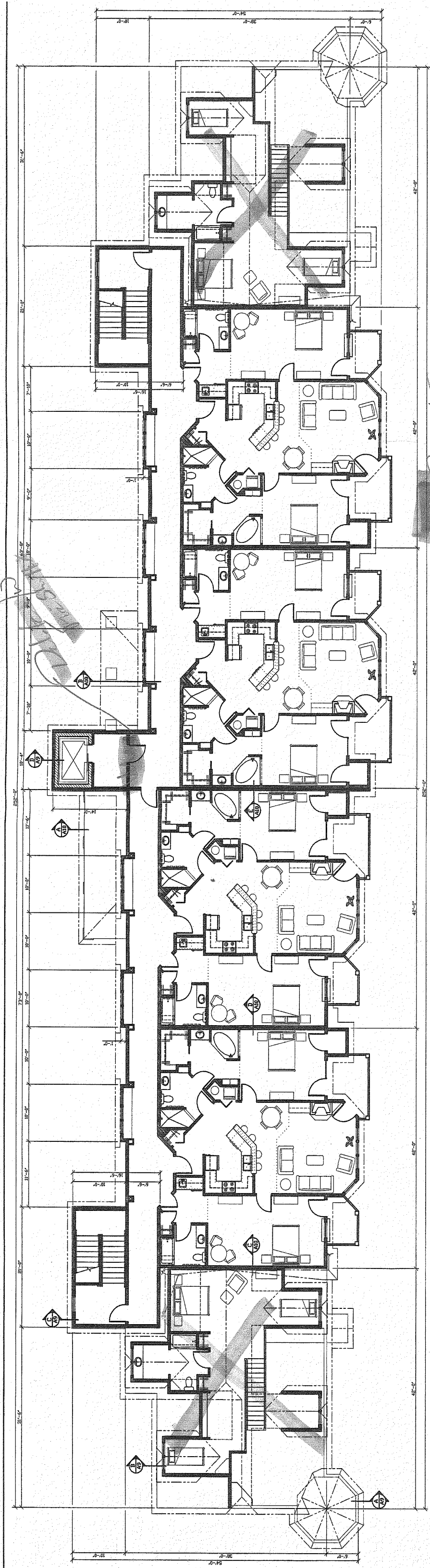
2 SECOND FLOOR PLAN  
1/8" = 1'-0"

NOTES:  
 ■ EXIT LITES AS PER IBC 907.2.1  
 PROVIDE MEANS OF EGRESS ILLUMINATION AS PER IBC 907.2.2  
 O.F.X. INDICATES A FIRE EXTINGUISHER.  
 INSTALL FIRE EXTINGUISHERS AS PER IBC 906.  
 COMMON AREA HANDICAP ACCESSIBILITY AS PER IBC CHAPTER 11 AND ANSI A117.1-1998.  
 PROVIDE 24" x 48" CLEAR SPACE ON FULL SIZE OF ALL DOORS.  
 PROVIDE 24" x 48" CLEAR SPACE ON FULL SIZE OF ALL DOORS.  
 THRESHOLDS MAX. 1/2" HALL DOORS TO HAVE LEVER HANDLES 34" TO 48" ABOVE FLOOR.

TAGALONG CONDOMINIUMS

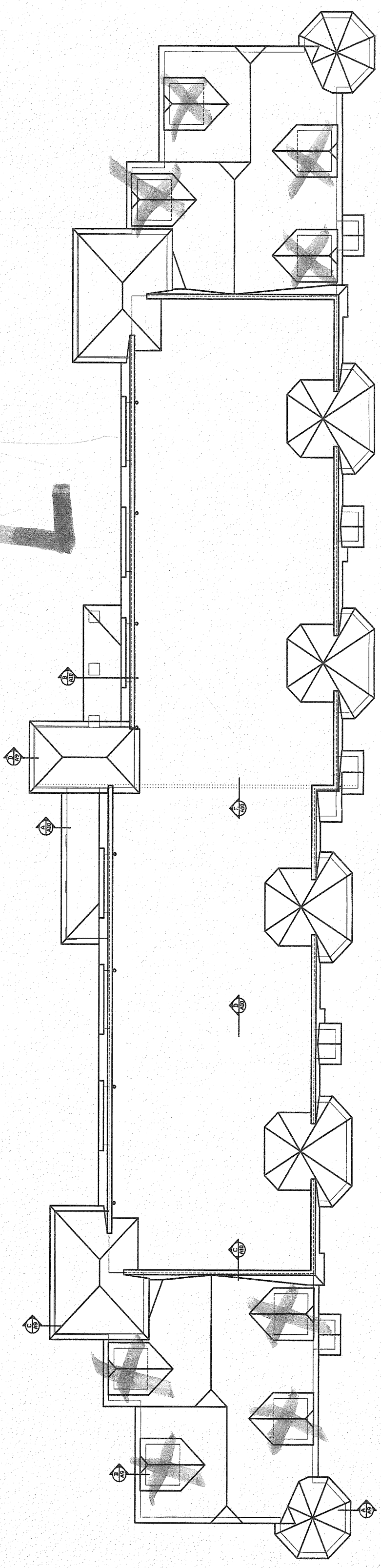
ROBERT JOHNSON  
 903 WINDSOR FOREST DRIVE  
 ALTOONA, WI 54720  
 PH: (715) 833-2228 FAX: (715) 833-2209

ORIGINAL:  
 8-25-05  
 REVISIONS:  
 12-20-05



*- Colic Lofts*

1 THIRD FLOOR PLAN  
1/8" = 1'-0"



2 ROOF PLAN  
1/8" = 1'-0"

TAGALONG CONDOMINIUMS

**ROBERT JOHNSON**  
903 WINDSOR FOREST DRIVE  
ALTOONA, WI 54720  
PH: (715) 833-2226 FAX: (715) 833-2209

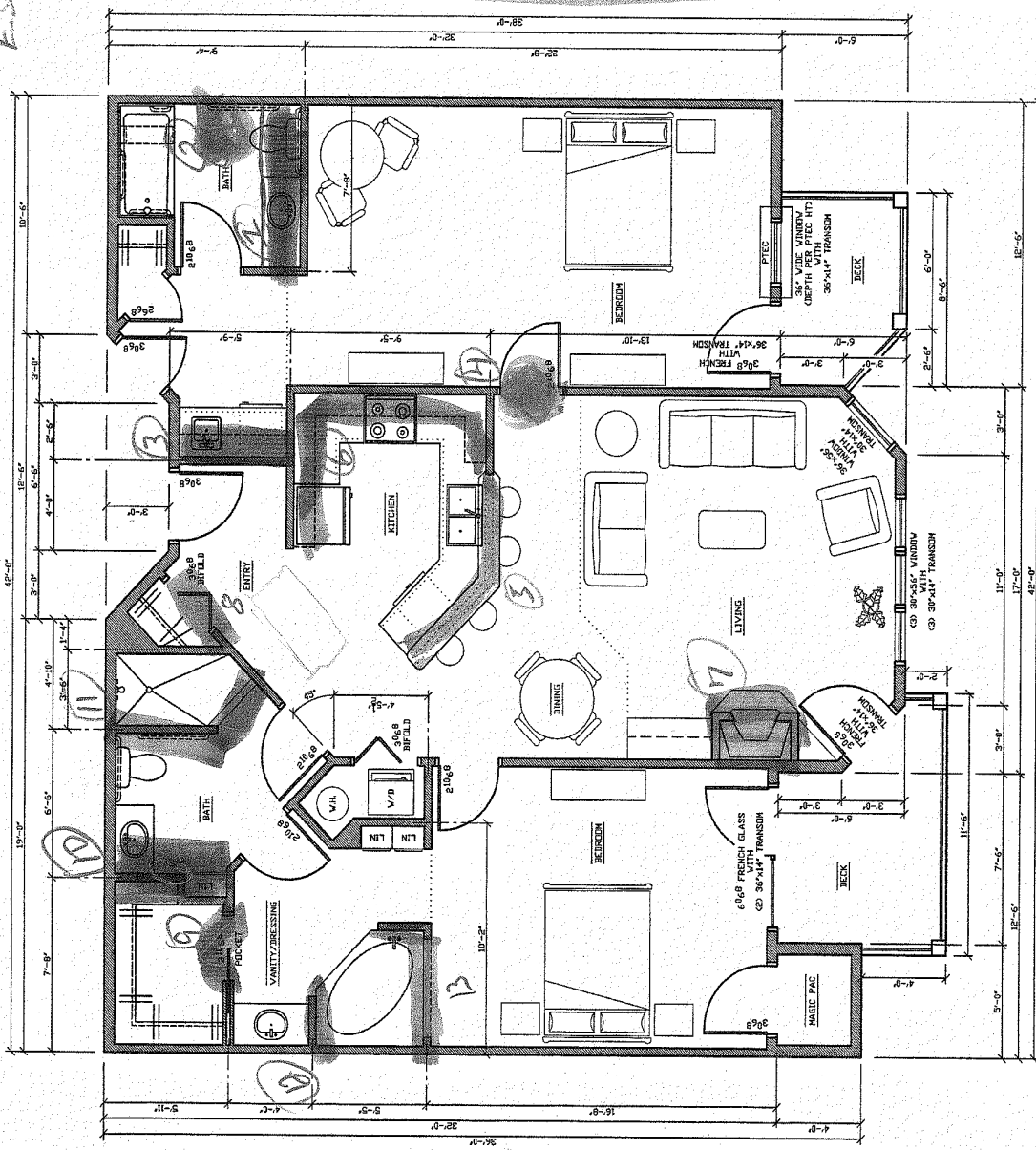
ORIGINAL:  
8-25-05  
REVISIONS:  
12-20-05

A4  
4 DF 10

- 7. Wish to see plastic Detail
- 8. Reverse Swing in Bifold
- 9. Hinged Door vs Pocket

Delicate Lining -  
 Cabinet  
 10. Relocate Vanity Adjacent to Cabinet  
 Make Brass work w/ Door  
 11. Showers will to be glass

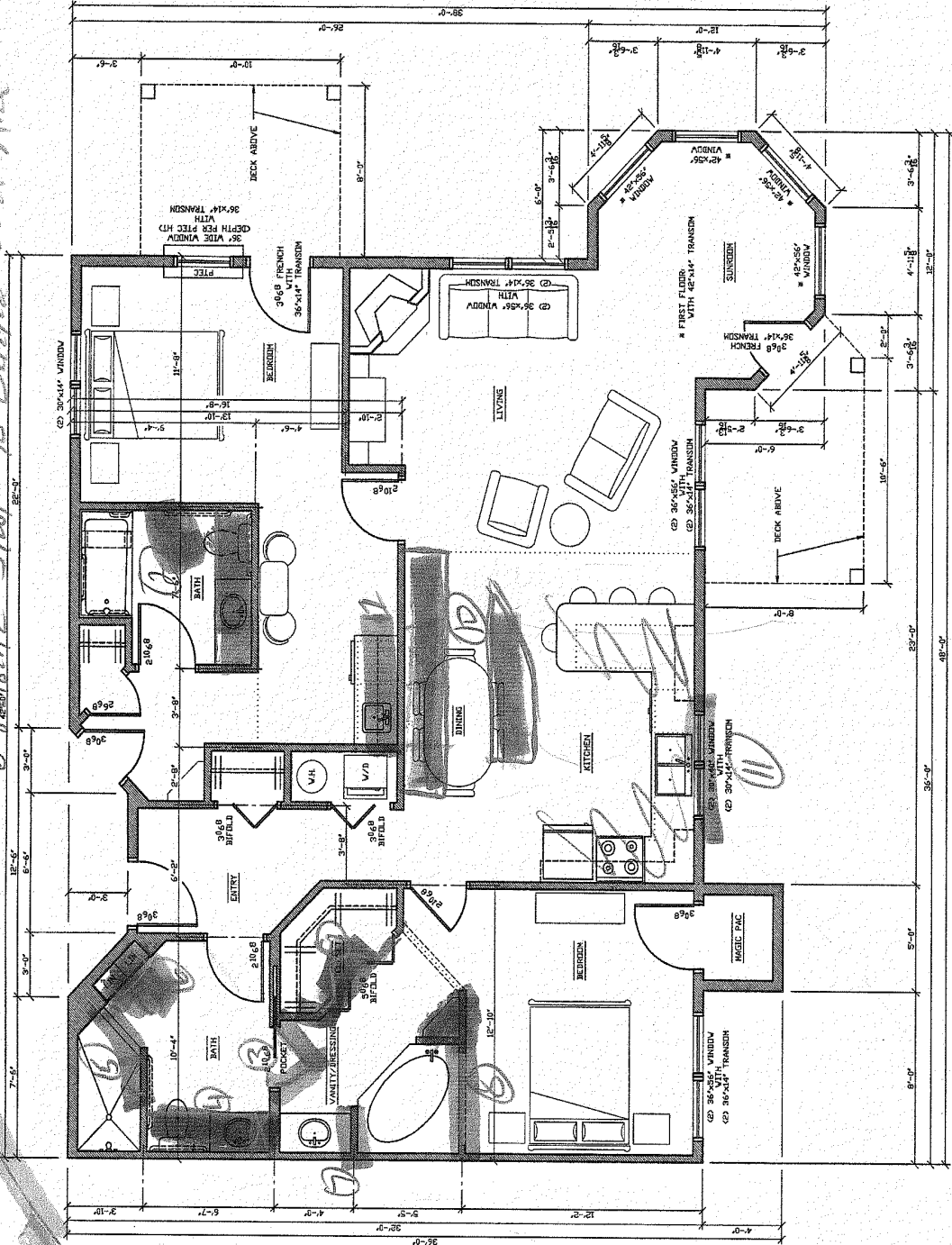
- 1. Full length Vanity
- 2. Relocate Stool
- 3. Relocate Overhead Cabinets
- 4. Door Swing Bld on S side w/ HK set
- 5. Relocate Kitchen Bar Extra Design or Counter
- 6. 48" upper or Detail Cap? make E.D. Panel @ End



2 BDRM UNIT  
 1/4" = 1'-0"

- 12. No wall between Jacuzzi + Vanity  
 Deck Batts to Vanity
- 13. 34" wall w/ Mating will cap to Vanity

- 2. Delete upper Cabinets
- 3. Re-Configure Bath Vanities  
 Full length Vanity
- 3. Swing Door vs Pocket Dr
- 4. Full length Vanity w/ 18" x 60" linen Cts 4ft
- 5. 2'-0" wall @ Vanity w/ Polycarbonate Enclosure
- 6. Relocate Stool to Relocated linen Area



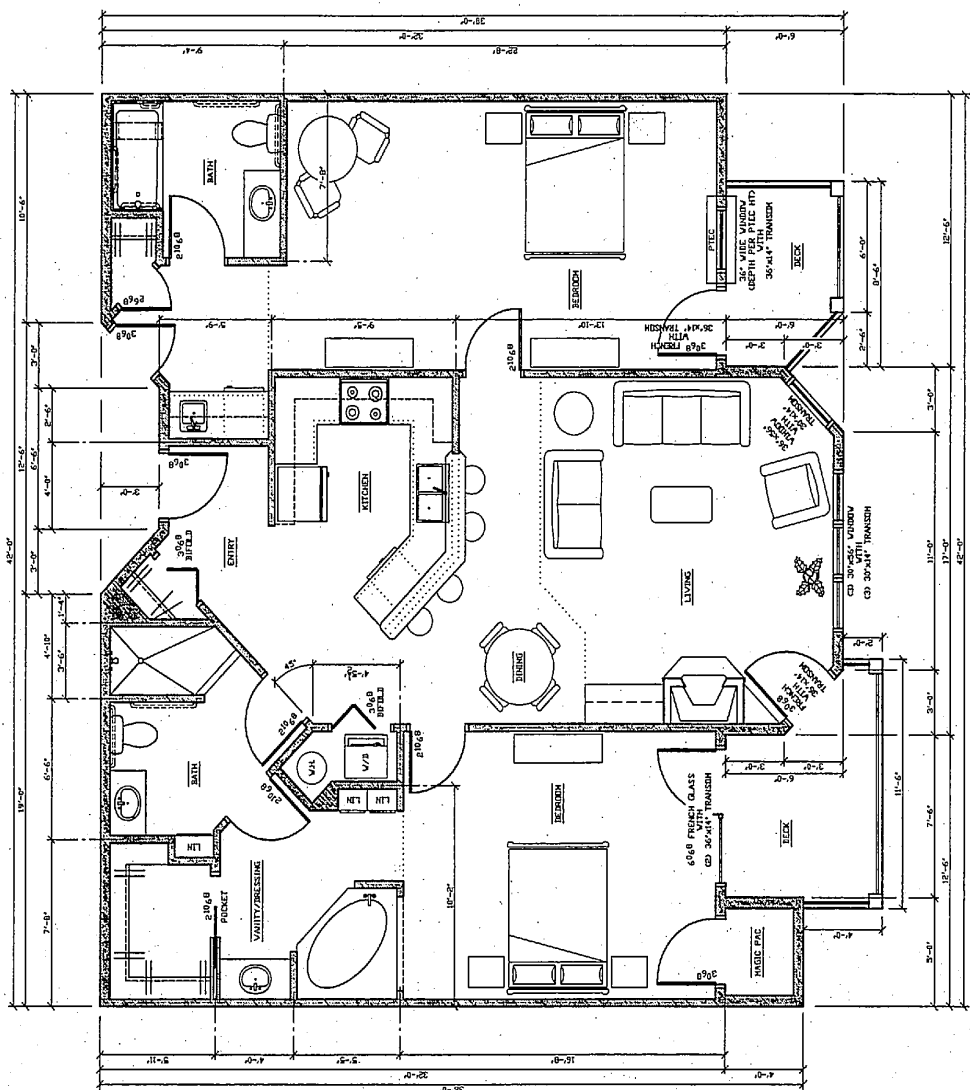
2 BDRM END UNIT 1ST FLOOR  
 1/4" = 1'-0"

- 7. No wall between Jacuzzi + Vanity  
 Deck Batts to Vanity
- 8. 34" wall w/ Mating will cap to Vanity
- 9. Length w/ Inswing Door
- 10. Relocate Kitchen Fridge Design 42" upper?
- 11. Windows to match Adjacent Windows

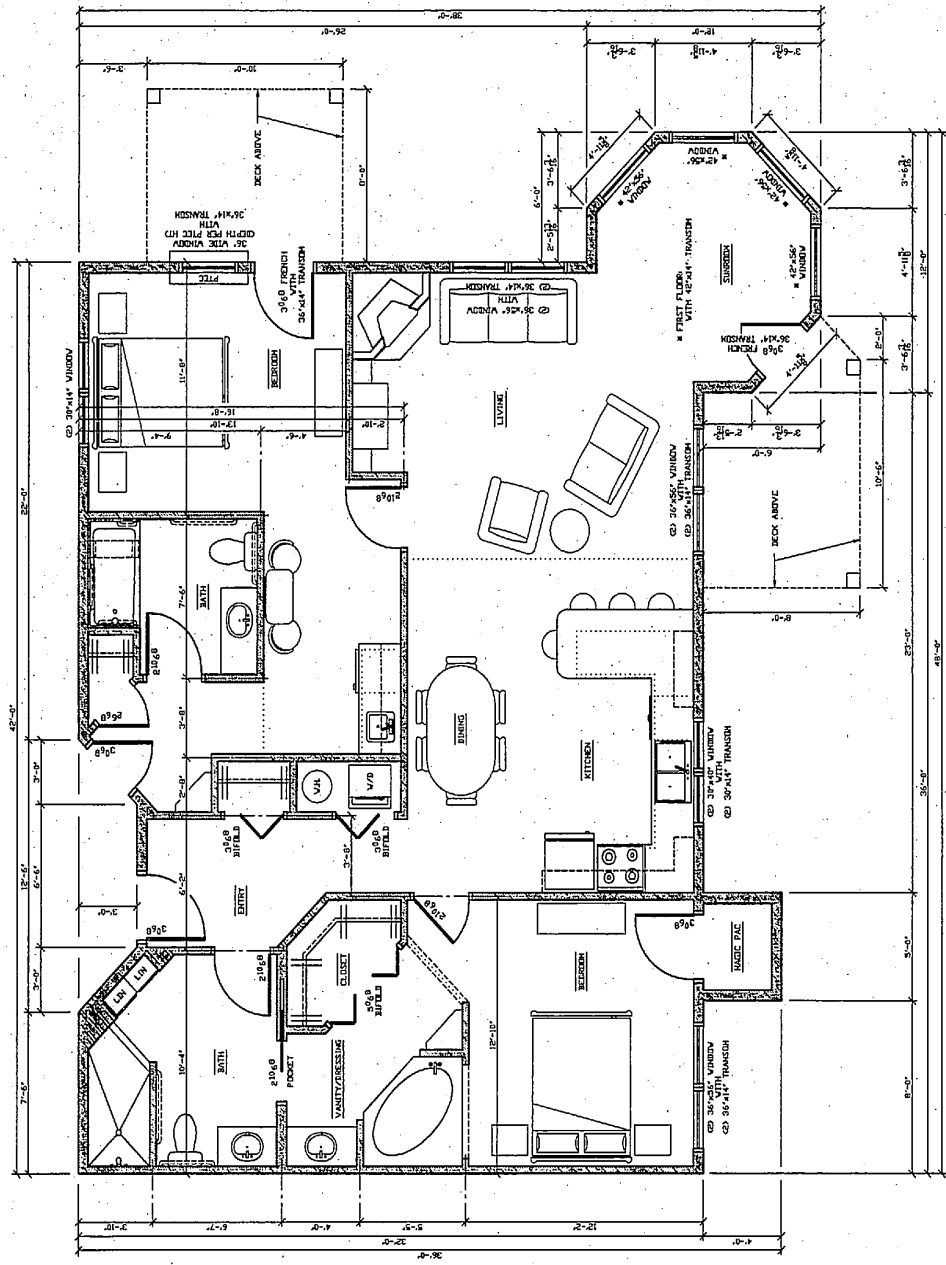
TAGALONG CONDOMINIUMS

ROBERT JOHNSON  
 903 WINDSOR FOREST DRIVE  
 ALTOONA, WI 54720  
 PH: (715) 833-2226 FAX: (715) 833-2209

ORIGINAL:  
 8-25-05  
 REVISIONS:  
 12-20-05



2 BDRM UNIT  
10' x 14'

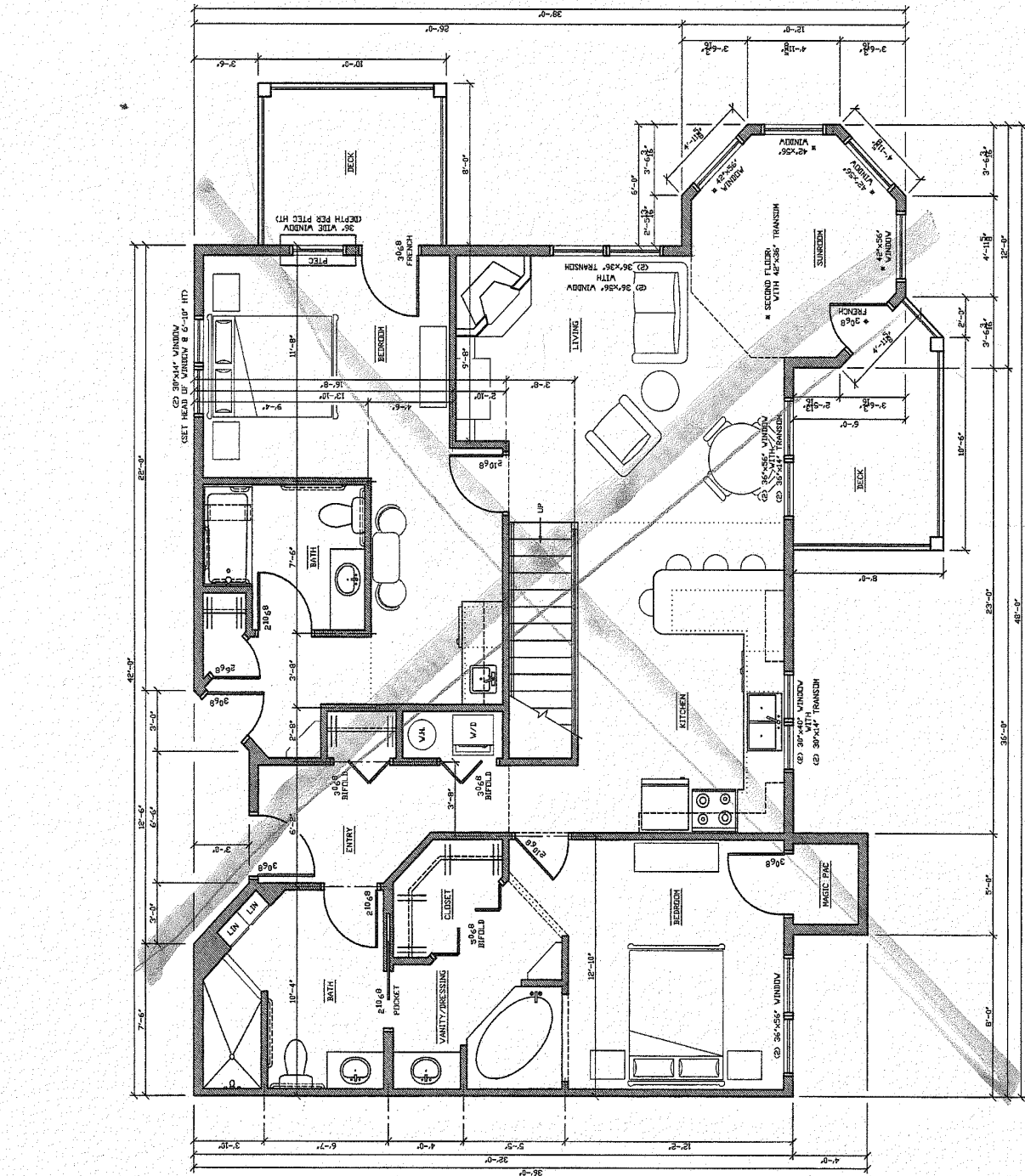


2 BDRM END UNIT 1ST FLOOR  
10' x 14'

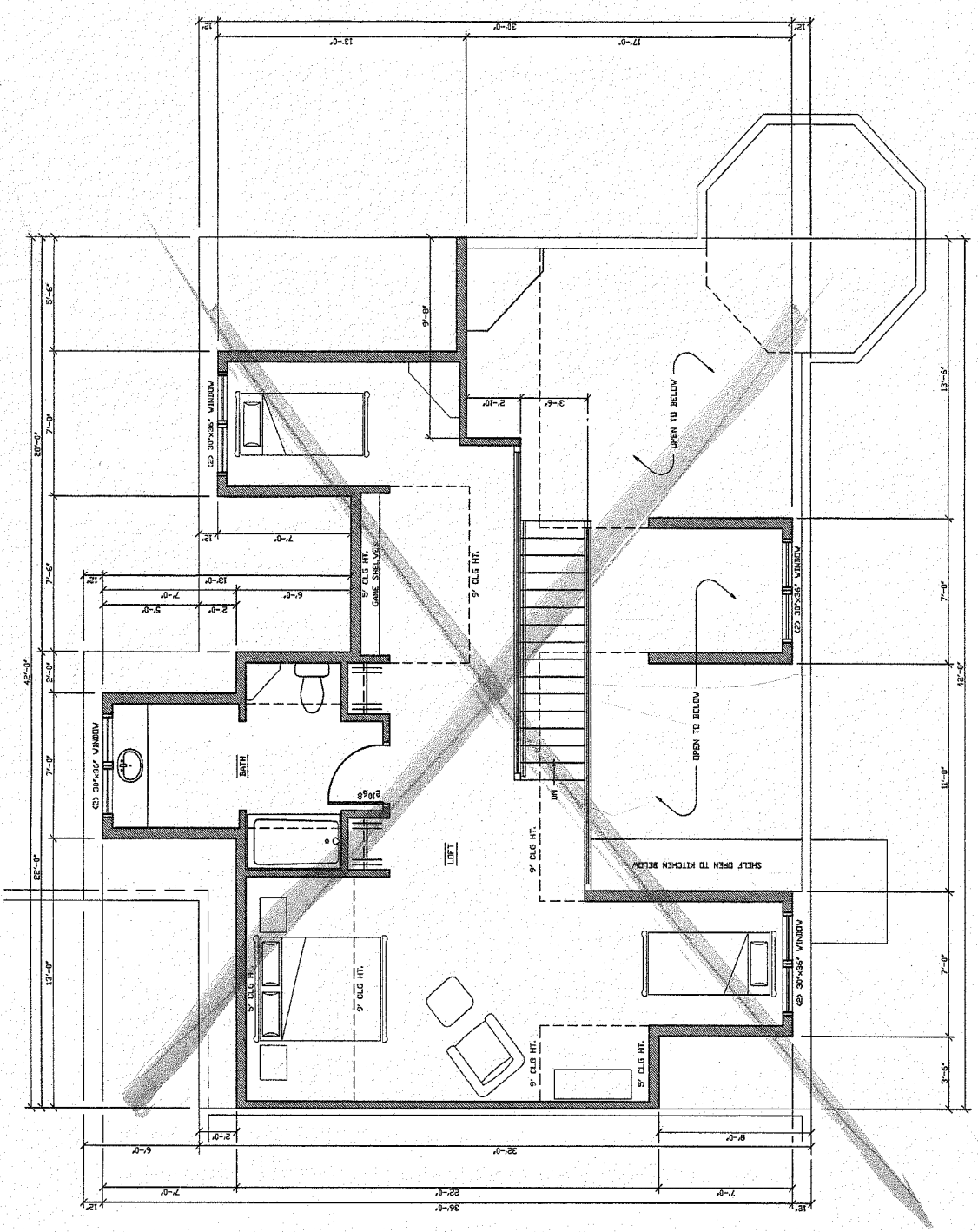
TAGALONG CONDOMINIUMS

**ROBERT JOHNSON**  
903 WINDSOR FOREST DRIVE  
AITOONA, WI 54720  
PH: (715) 833-2228 FAX: (715) 833-2209

ORIGINAL	8-25-05
REVISIONS	1E-20-05



2 BDRM END UNIT 2ND FLOOR  
1/4" = 1'-0"



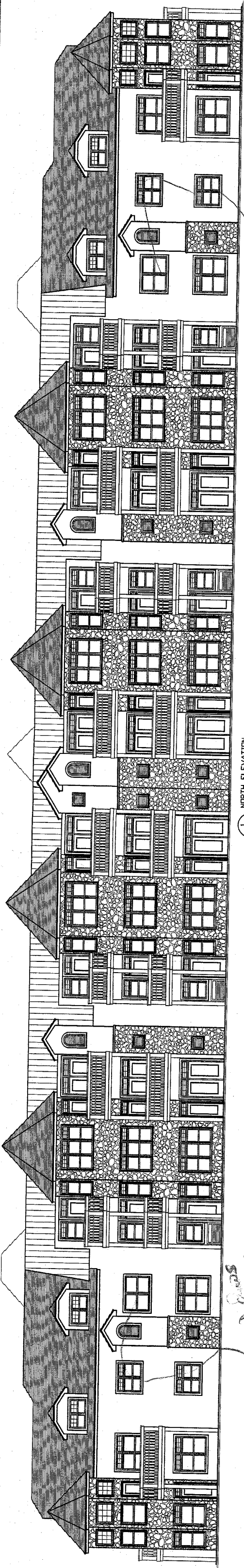
2 BDRM END UNIT LOFT  
1/4" = 1'-0"

TAGALONG CONDOMINIUMS

ROBERT JOHNSON  
903 WINDSOR FOREST DRIVE  
ALTOONA, WI 54720  
PH: (715) 833-2226 FAX: (715) 833-2209

ORIGINAL	8-25-05
REVISIONS	12-20-05

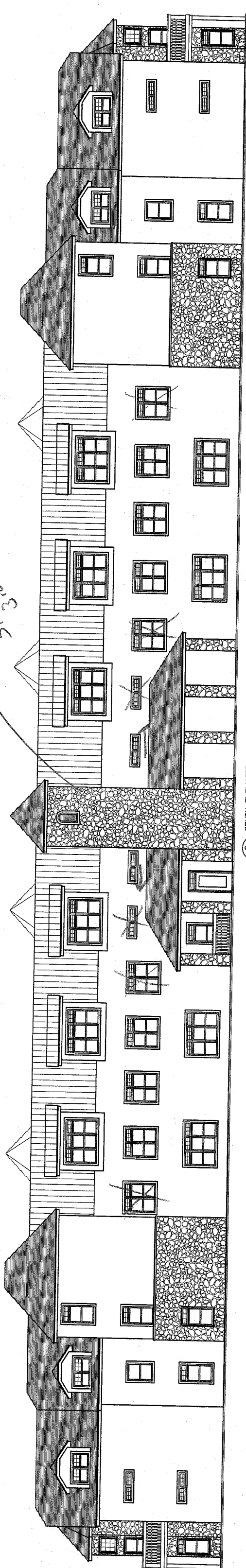




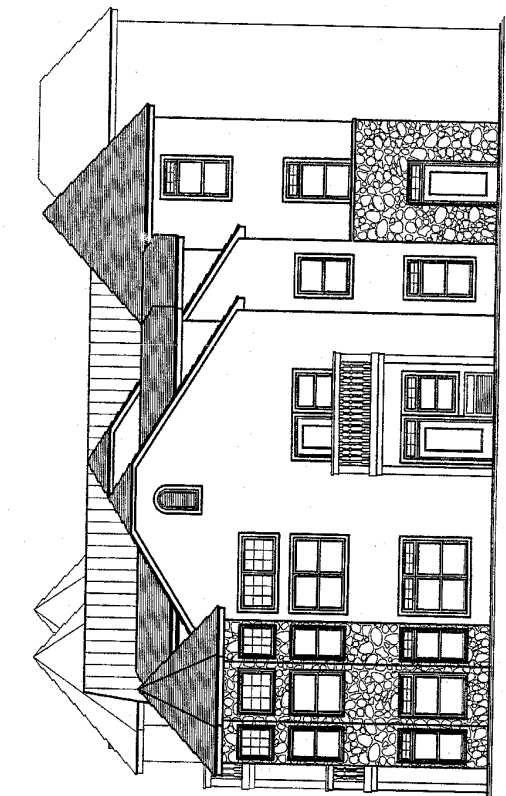
*Windsors to Match*

*3 Stone  
panels  
per window*

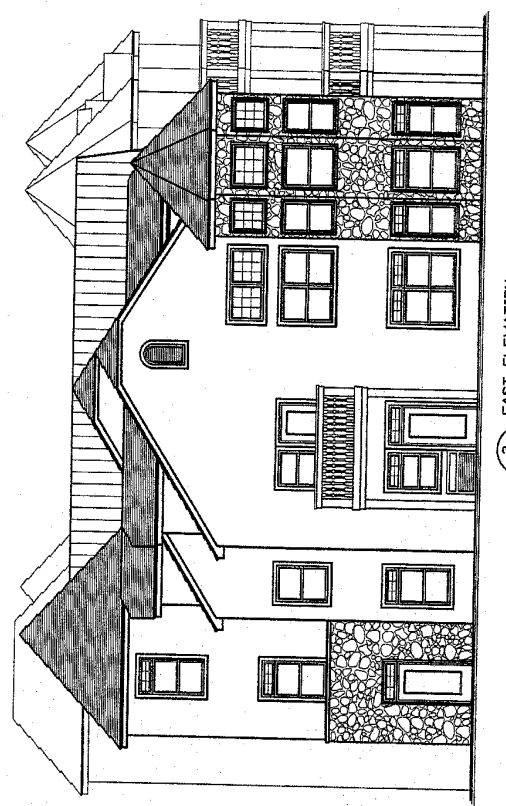
*Windsors  
to Match*



2 SOUTH ELEVATION  
1/8" = 1'-0"



4 WEST ELEVATION  
1/8" = 1'-0"



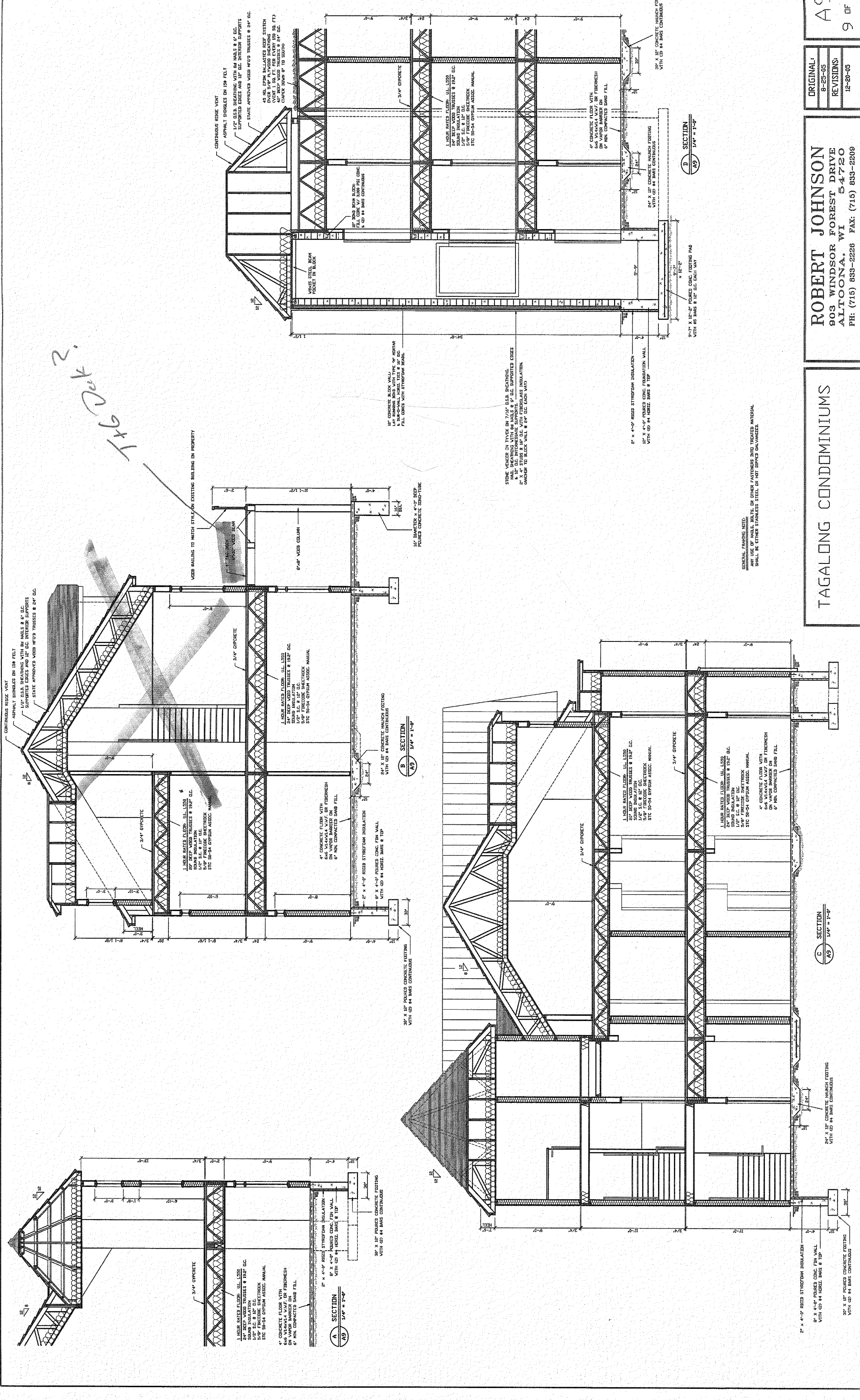
3 EAST ELEVATION  
1/8" = 1'-0"

TAGALONG CONDOMINIUMS

**ROBERT JOHNSON**  
 903 WINDSOR FOREST DRIVE  
 ALTOONA, WI 54720  
 PH: (715) 833-2226 FAX: (715) 833-2209

ORIGINAL:	8-25-05
REVISIONS:	12-20-05

7x6 Deck?



CONTINUOUS ROOF VENT  
ASPHALT SHINGLES ON 1/2" FELT  
1/2" DEEP SHEATHING WITH 84 WALS & 6" D.C.  
SUPPORTED EDGES AND 12" D.C. INTERIOR SUPPORTS  
STATE APPROVED VOID WOOD TRUSSES & 24" D.C.

VOID BEILING TO MATCH STYLE/AN EXISTING BUILDING ON PROPERTY  
VOID BEAM  
1/2" D.C. INTERIOR SUPPORTS

CONTINUOUS ROOF VENT  
ASPHALT SHINGLES ON 1/2" FELT  
1/2" DEEP SHEATHING WITH 84 WALS & 6" D.C.  
SUPPORTED EDGES AND 12" D.C. INTERIOR SUPPORTS  
STATE APPROVED VOID WOOD TRUSSES & 24" D.C.

1 HOUR RATED FLOOR: ULL LSSO  
24" DEEP VOID TRUSSES & 12" D.C.  
SHEATHING INSULATION  
5/8" FIBROGLASS SHEETROCK  
5/8" MIN. COMPACTED SAND FILL

3/4" GYPSCRETE

4" CONCRETE FLOOR WITH  
606 MIAMMA WAF. OR FIBREGLASS  
6" MIN. COMPACTED SAND FILL

1 HOUR RATED FLOOR: ULL LSSO  
24" DEEP VOID TRUSSES & 12" D.C.  
SHEATHING INSULATION  
5/8" FIBROGLASS SHEETROCK  
5/8" MIN. COMPACTED SAND FILL

3/4" GYPSCRETE

1 HOUR RATED FLOOR: ULL LSSO  
24" DEEP VOID TRUSSES & 12" D.C.  
SHEATHING INSULATION  
5/8" FIBROGLASS SHEETROCK  
5/8" MIN. COMPACTED SAND FILL

3/4" GYPSCRETE

1 HOUR RATED FLOOR: ULL LSSO  
24" DEEP VOID TRUSSES & 12" D.C.  
SHEATHING INSULATION  
5/8" FIBROGLASS SHEETROCK  
5/8" MIN. COMPACTED SAND FILL

3/4" GYPSCRETE

1 HOUR RATED FLOOR: ULL LSSO  
24" DEEP VOID TRUSSES & 12" D.C.  
SHEATHING INSULATION  
5/8" FIBROGLASS SHEETROCK  
5/8" MIN. COMPACTED SAND FILL

3/4" GYPSCRETE

1 HOUR RATED FLOOR: ULL LSSO  
24" DEEP VOID TRUSSES & 12" D.C.  
SHEATHING INSULATION  
5/8" FIBROGLASS SHEETROCK  
5/8" MIN. COMPACTED SAND FILL

3/4" GYPSCRETE

1 HOUR RATED FLOOR: ULL LSSO  
24" DEEP VOID TRUSSES & 12" D.C.  
SHEATHING INSULATION  
5/8" FIBROGLASS SHEETROCK  
5/8" MIN. COMPACTED SAND FILL

3/4" GYPSCRETE

1 HOUR RATED FLOOR: ULL LSSO  
24" DEEP VOID TRUSSES & 12" D.C.  
SHEATHING INSULATION  
5/8" FIBROGLASS SHEETROCK  
5/8" MIN. COMPACTED SAND FILL

3/4" GYPSCRETE

1 HOUR RATED FLOOR: ULL LSSO  
24" DEEP VOID TRUSSES & 12" D.C.  
SHEATHING INSULATION  
5/8" FIBROGLASS SHEETROCK  
5/8" MIN. COMPACTED SAND FILL

3/4" GYPSCRETE

30" X 12" POURED CONCRETE FOOTING  
WITH #4 BARS CONTINUOUS

2" X 4" FIBROGLASS INSULATION  
WITH #4 HORIZ. BARS & TOP

2" X 4" FIBROGLASS INSULATION  
WITH #4 HORIZ. BARS & TOP

30" X 12" POURED CONCRETE FOOTING  
WITH #4 BARS CONTINUOUS

2" X 4" FIBROGLASS INSULATION  
WITH #4 HORIZ. BARS & TOP

2" X 4" FIBROGLASS INSULATION  
WITH #4 HORIZ. BARS & TOP

30" X 12" POURED CONCRETE FOOTING  
WITH #4 BARS CONTINUOUS

2" X 4" FIBROGLASS INSULATION  
WITH #4 HORIZ. BARS & TOP

2" X 4" FIBROGLASS INSULATION  
WITH #4 HORIZ. BARS & TOP

30" X 12" POURED CONCRETE FOOTING  
WITH #4 BARS CONTINUOUS

2" X 4" FIBROGLASS INSULATION  
WITH #4 HORIZ. BARS & TOP

2" X 4" FIBROGLASS INSULATION  
WITH #4 HORIZ. BARS & TOP

30" X 12" POURED CONCRETE FOOTING  
WITH #4 BARS CONTINUOUS

2" X 4" FIBROGLASS INSULATION  
WITH #4 HORIZ. BARS & TOP

2" X 4" FIBROGLASS INSULATION  
WITH #4 HORIZ. BARS & TOP

30" X 12" POURED CONCRETE FOOTING  
WITH #4 BARS CONTINUOUS

2" X 4" FIBROGLASS INSULATION  
WITH #4 HORIZ. BARS & TOP

2" X 4" FIBROGLASS INSULATION  
WITH #4 HORIZ. BARS & TOP

30" X 12" POURED CONCRETE FOOTING  
WITH #4 BARS CONTINUOUS

2" X 4" FIBROGLASS INSULATION  
WITH #4 HORIZ. BARS & TOP

2" X 4" FIBROGLASS INSULATION  
WITH #4 HORIZ. BARS & TOP

30" X 12" POURED CONCRETE FOOTING  
WITH #4 BARS CONTINUOUS

30" X 12" POURED CONCRETE FOOTING  
WITH #4 BARS CONTINUOUS

2" X 4" FIBROGLASS INSULATION  
WITH #4 HORIZ. BARS & TOP

2" X 4" FIBROGLASS INSULATION  
WITH #4 HORIZ. BARS & TOP

30" X 12" POURED CONCRETE FOOTING  
WITH #4 BARS CONTINUOUS

2" X 4" FIBROGLASS INSULATION  
WITH #4 HORIZ. BARS & TOP

2" X 4" FIBROGLASS INSULATION  
WITH #4 HORIZ. BARS & TOP

30" X 12" POURED CONCRETE FOOTING  
WITH #4 BARS CONTINUOUS

2" X 4" FIBROGLASS INSULATION  
WITH #4 HORIZ. BARS & TOP

2" X 4" FIBROGLASS INSULATION  
WITH #4 HORIZ. BARS & TOP

30" X 12" POURED CONCRETE FOOTING  
WITH #4 BARS CONTINUOUS

2" X 4" FIBROGLASS INSULATION  
WITH #4 HORIZ. BARS & TOP

2" X 4" FIBROGLASS INSULATION  
WITH #4 HORIZ. BARS & TOP

30" X 12" POURED CONCRETE FOOTING  
WITH #4 BARS CONTINUOUS

2" X 4" FIBROGLASS INSULATION  
WITH #4 HORIZ. BARS & TOP

2" X 4" FIBROGLASS INSULATION  
WITH #4 HORIZ. BARS & TOP

30" X 12" POURED CONCRETE FOOTING  
WITH #4 BARS CONTINUOUS

2" X 4" FIBROGLASS INSULATION  
WITH #4 HORIZ. BARS & TOP

2" X 4" FIBROGLASS INSULATION  
WITH #4 HORIZ. BARS & TOP

30" X 12" POURED CONCRETE FOOTING  
WITH #4 BARS CONTINUOUS

2" X 4" FIBROGLASS INSULATION  
WITH #4 HORIZ. BARS & TOP

2" X 4" FIBROGLASS INSULATION  
WITH #4 HORIZ. BARS & TOP

30" X 12" POURED CONCRETE FOOTING  
WITH #4 BARS CONTINUOUS

**ROBERT JOHNSON**  
903 WINDSOR FOREST DRIVE  
ALTOONA, WI 54720  
PH: (715) 833-2226 FAX: (715) 833-2209

**TAGALONG CONDOMINIUMS**

SECTION  
A9  
1/4" = 1'-0"

SECTION  
B9  
1/4" = 1'-0"

SECTION  
C9  
1/4" = 1'-0"

SECTION  
D9  
1/4" = 1'-0"

ORIGINAL:  
6-25-05  
REVISIONS:  
12-20-05